



Golf Cart Tips

What Year Is My Yamaha Golf Cart? Yamaha Golf Cart Models By Year

[Home](#) [Categories ▾](#) [Privacy Policy](#) [Contact](#) [About Us](#) [Resources](#)

[Legal](#)

Search

Search

Search



Audio
Transcript

PDF
Download

Latest Posts



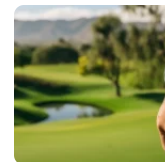
Expert Guide to Troubleshooting Club Car Golf Cart Wiring Issues

January 15, 2024



9 Best Golf Cart Maintenance and Repair Tips

January 8, 2024



Discover the Top Golf GPS Watches: Enhance Your Game Control Today!



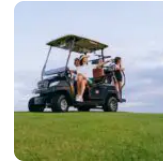
[Table of Contents >](#)

Last Updated on January 15, 2024 by Chuck Wilson

What Year Is My Yamaha Golf Cart? The year and model of your Yamaha golf cart is found in the first 4 digits of the serial number code. This the listing of all of the models and the years they were produced. You will also be able to locate your specific **yamaha golf cart models by year** in the guide below.

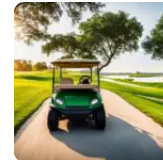
Your **Serial Number Plate** is located in one of three places:

November [Manage consent](#)



Golf Cart How tos: The Definitive Guide to Expert Advice 2023

November 17, 2023



Golf Cart Maintenance: The Ultimate Guide

November 9, 2023

Disclaimer

As an affiliate, we may earn a commission from qualifying purchases. We get commissions for purchases made through links on this website from Amazon and other third parties.

1. Under the rear bumper on the frame
2. Under the seat cover where the floor board joins to the motor compartment
3. Under driver side glove box

The specific location will be shown below based on your Yamaha model.

In 1979, Yamaha's main competition was E-Z-Go and Harley Davidson (AMF). The body style changes over the years for the Yamaha golf cart models are a little more subtle than those of the E-Z-Go and Club Car. Because of these minor changes, many of you are wondering what year is my Yamaha golf cart. Well, sooner or later, you will need the year model of your golf cart to find replacement parts.

How Do I Find The Year Of My Yamaha Golf Cart Model And Year Using the Serial Number?

Locate the serial number according to the illustrations accompanying the models listed below, then match up the number in the range shown on the tables.

Yamaha Model G1 1979 – 1989

Yamaha entered the golf cart scene with the model G1, which sported a 2-cycle gas engine. Club Car was not even producing gas-powered golf carts at this time. The G1 was introduced in 1979 and production on the electric was discontinued in 1986, the gas model ended in 1989. The vehicle has bucket seats and the entire rear body and top swing up and back to access the drive train.



Model G1

The G1 is powered by 1. A 2 cycle gas engine with an oil injection system or 2. By 36-volt electric motors & six 6V batteries. The G1 underwent several alterations over 10 years of production. The different early models (and model year of manufacture) are identified by the serial number and its prefix.

The original 'J10' model is followed by the 'J17', the 'J24' and finally the 'J31' model. The engines and bodies stayed very similar throughout the G1 model design.

The Yamaha G1 golf car has never had a standard 'factory' top assembly. There were several aftermarket manufacturers that provided the top section so, in order to get a wrap-around rain curtain to fit your G1, it's pretty important to get the manufacturer's name that produced YOUR cart top.

Serial Number Location

The identification numbers are located near the drivers side rear tire underneath the golf cart on the square cross member of the frame.

G1E Electric Yamaha

Serial Number	Model	Year
J14-000101 to J14-099999	G1-E	1980
J14-100101 to J14-099999	G1-E2	1981
J22-000101 to J22-099999	G1-E3	1982
J26-000101 to J26-099999	G1-EM3	1983
J36-000101 to J36-009999	G1-EM4	1984
J36-010101 to J36-011211	G1-EM5	1985
J36-011212 to J36-01xxxx	G1-EM	1986

Edit

Gas Yamaha G1

Serial Number	Model	Year
J10-000101 to J10-007704	G1-A1	1979
J10-007705 to J10-029999	G1-A1	1980
J10-030101 to J10-049999	G1-A2	1981

Gas Yamaha G1

J17-000101 to J17-029999	G1-A3	1982
J24-000101 to J24-029999	G1-AM3	1983
J31-000101 to J31-099999	G1-AM4	1984
J31-100101 to J31-139999	G1-AM5	1985
J31-140101 to J31-149550	G1-AM	1986
J31-159082 to J31-1xxxxx	G1-AMD	1989

Edit

Yamaha G2

The Yamaha G2 began production in 1985 and the serial number can be located either under the seat towards the front of the golf cart or under the front bumper on the frame of the golf cart



Model G2

Gas Yamaha G2A

Serial Number	Model	Year
J38-000101 to J10-007100	G2-A5	1985
J38-007101 to J38-066100	G2-A	1986
J38-066101 to J41-020100	G2-A	1986
J38-020101 to J38-071100	G2-AB	1987
J38-071101 to J38-07xxxx	G2-AB	1988
JA2-000001 to JA2-xxxxxx	G2-AC	1988
J55-000101 to J55-100119	G2-AD	1989
J55-100120 to J55-200100	G2-AF	1990
J55-200101 to J55-20xxxx	G2-AG	1991

Edit

Electric Yamaha G2E

Serial Number	Model	Year
J41-000101 to J10-016100	G2-E5	1985
J41-016101 to J41-030100	G2-E	1986
J41-030101 to J41-053100	G2-EB	1987

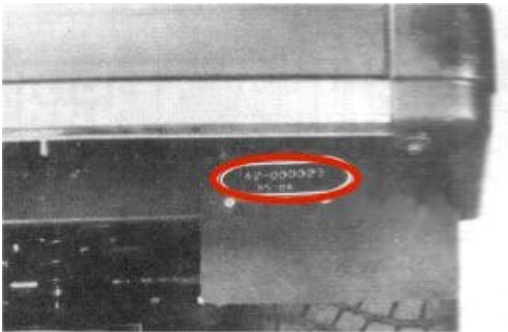
Electric Yamaha G2E

J41-053101 to J41-0xxxxx	G2-EB	1988
JE2-000101 to JE2-00xxxx	G2-EC	1988
J56-000101 to J56-100100	G2-ED	1989
J56-100101 to J56-200100	G2-EF	1990
J56-200101 to J56-20xxxx	G2-EG	1991

Edit

Yamaha G3 “Sun Classic” Models

In 1986, Yamaha introduced the Sun Classic (or G3) with a 2-cycle engine or 36-volt electric system. It was the first golf vehicle made with an integrated roof and tempered-glass windshield complete with a wiper. Headlights, a front trunk, turn signals, and custom dash, were standard equipment. The G3 was later replaced by a larger G5 Sun Classic.



Serial Location For G3

The serial number for the Yamaha G3 Sun Classic model golf cart is usually located just under the rear bumper on the passenger’s side. It is stamped onto a

tin tag which is riveted to the frame. It should begin with either a “J46” prefix for electric models and a “J42” prefix for gas models. See below.

Gas Yamaha G3A

Serial Number	Model	Year
J42-000101 to J42-xxxxxx	G3A	1986

Edit

Electric Yamaha G3E

Serial Number	Model	Year
J46-000101 to J46-xxxxxx	G3E	1987

Edit

Yamaha G5 “Sun Classic” Models

The serial number this model golf cart is usually located on the front of the vehicle stamped into a tin tag and riveted to the frame, underneath the cart on the main cross member of the forward frame.



Yamaha G5 Serial Location

Gas Yamaha G5A

Serial Number	Model	Year
J50-000101 to J50-100100	G5AF	1990
J50-100101 to J50-1xxxxx	G5AG	1991
J50-200103 to J50-2xxxxx	G5AH	1992

Edit

Electric Yamaha G5E

Serial Number	Model	Year
J51-000101 to J51-100100	G5EF	1990
J51-100101 to J51-1xxxxx	G5EG	1991
J50-200101 to J50-2xxxxx	G5EH	1992

Edit

Yamaha G8

The Yamaha G8 is a modified version of the fleet model G9 (See below). The G8 came out in 1990 and it exhibited a curved front cowl and rear fenders. It also has a long, full front bumper (side to side) and the seat bottom can be completely removed from the cart, whereas the G9 (and G2) seat bottom remains fixed to the seat pedestal and cannot be easily removed from the cart. The dash compartment interiors and dash trim are black. The G8 was retired in '94.



Yamaha Model G8

The G8 Golf Cart serial number is located under the passenger side seat towards the front of the golf cart.

Gas Yamaha G8A

Serial Number	Model	Year
JF2-000007 to JF2-100100	G8AF	1990
JF2-100101 to JF2-1xxxxx	G8AG	1991
JF2-200101 to JF2-2xxxxx	G8AH	1992
JF2-300101 to JF2-3xxxxx	G8AJ	1993
JF2-400101 to JF2-4xxxxx	G8AK	1994

Edit

Electric Yamaha G8E

Serial Number	Model	Year
JF3-000005 to JF3-100100	G8EF	1990
JF3-100101 to JF3-1xxxxx	G8EG	1991
JF3-200101 to JF3-2xxxxx	G8EH	1992
JF3-300101 to JF3-3xxxxx	G8EJ	1993
JF3-400101 to JF3-401800	G8EK	1994
JF3-401801 to JF3-4xxxxx	G8EKP	1995

Edit

Yamaha Model G9

The G9 models started in 1991 with the prefix ‘JG5’, and the serial can be found just behind the back edge of the mat, under the seat pedestal in the engine compartment.



Yamaha Model G9

Gas Yamaha G9A (Fleet Master)

Serial Number	Model	Year
JG5-000101 to JG5100100	G9AG	1991
JG5-100101 to JG5-10xxxx	G9AH	1992
JG5-200101 to JG5-2xxxxx	G9AJ	1993
JG5-300101 to JG5-3xxxxx	G9AK	1994
JG5-400101 to JG5-4xxxxx	G9AM	1995

Edit

Electric Yamaha G9E (Fleet Master)

Serial Number	Model	Year
JG6-000001 to JG6-100100	G9EG	1991
JG6-100101 to JG6-1xxxxx	G9EH1	1992
JH7-000125 to JH7-100100	G9EH2	1992
JH7-100101 to JH7-1xxxxx	G9EJ	1993
JH7-200149 to JH7-201800	G9EJ	1994
JH7-201801 to JH7-2xxxxx	G9EK/KP	1994
JH7-300101 to JH7-3xxxxx	G9EM	1995

Edit

Yamaha Model G11

The Model G11 is a utility Vehicle used for maintenance and light hauling. It is also called the “Yamahauler”. This model came with a heavy-duty steel front bumper and an aluminum box with a tailgate and a rear trailer hitch. In 1996 they installed a larger 301cc engine in the G11.



Yamaha Model G11

The G11 Serial Number location is underneath the seat towards the rear of the golf cart.

Gas Yamaha G11A (Yamahauler)

Serial Number	Model	Year
JJ3-000101 to JJ3-100100	G11AJ	1993
JJ3-100101 to JJ2-1xxxxx	G11AK	1994
JJ3-200101 to JJ3-2xxxxx	G11AP	1996
JR3-000101 to JR3-100100	G11AR	1997
JR3-100101 to JR3-1xxxxx	G11AS	1998
JR3-200101 to JR3-2xxxxx	G11AT	1999

Gas Yamaha G11A (Yamahauler)

JR3-300101 to JR3-3xxxxx	G11AU	2000
JR3-400101 to JR3-4xxxxx	G11AW	2001

Edit

Yamaha Models G14 G16 G19 G20

These serial numbers can be found just under the glove box on the far left of the driver’s side of the vehicle.

In 1995 the G14 was introduced followed in 1996 by the G16 and G19 which was Yamaha’s first 48-volt cart.



Yamaha Model
G14/G16/G19/G20

Gas Yamaha G14A (Ultima)

Serial Number	Model	Year
JN3-100101 to JN3-1xxxxx	G14AM	1995
JN3-200101 to JN3-2xxxxx	G14AP	1996

Edit

Electric Yamaha G14E (Ultima)

Serial Number	Model	Year
JN4-100101 to JN4-1xxxxx	G14EM	1995
JN4-200101 to JN4-2xxxxx	G14EP	1996

Edit

Gas Yamaha G16A (Ultima)

Serial Number	Model	Year
JN6-000101 to JN6-100100	G16AP	1996
JN6-100101 to JN6-1xxxxx	G16AR	1997
JN6-200101 to JN6-2xxxxx	G16AS	1998
JN6 -300101 to JN6-3xxxxx	G16AT	1999
JN6-400101 to JN6-4xxxxx	G16AU	2000
JN6-500101 to JN6-5xxxxx	G16AW	2001
JN6-600101 to JN6-6xxxxx	G16AX	2002

Edit

Electric Yamaha G16E (Ultima)

Serial Number	Model	Year
---------------	-------	------

Electric Yamaha G16E (Ultima)

JN8-000101 to JN8-100100	G16EP	1996
JN8-100101 to JN8-1xxxxx	G16ER	1997
JN8-200101 to JN8-2xxxxx	G16ES	1998
JN8 -300101 to JN8-3xxxxx	G16ET	1999
JN8-400101 to JN8-4xxxxx	G16EU	2000
JN8-500101 to JN8-5xxxxx	G16EW	2001
JN8-600101 to JN8-6xxxxx	G16EX	2002

Edit

The Yamaha G19 serial number is typically located inside the driver’s side glove compartment or under the rear bumper attached to the frame.

Electric Yamaha G19E (Ultima 48-volt)

Serial Number	Model	Year
JR1-000101 to JR1-100100	G19EP	1996
JR1-100101 to JR1-1xxxxx	G19ER	1997
JR1-200101 to JR1-2xxxxx	G19ES	1998
JR1 -300101 to JR1-3xxxxx	G19ET	1999
JR1-400101 to JR1-4xxxxx	G19EU	2000

Electric Yamaha G19E (Ultima 48-volt)		
JR1-500101 to JR1-5xxxxx	G19EW	2001
JR1-600101 to JR1-6xxxxx	G19EX	2002
Edit		

Gas Yamaha G20A (Concierge)		
Serial Number	Model	Year
JR8-000101 to JR8-100100	G20AU	2000
JR8-100101 to JR8-1xxxxx	G20AW	2001
JR8-200101 to JR8-2xxxxx	G20AX	2002
Edit		

Gas Yamaha G21A (Yamahauler)		
Serial Number	Model	Year
JR6-000101 to JR6-100100	G21AW	2001
JR6-100101 to JR6-1xxxxx	G21AX	2002
JR6-200101 to JR6-2xxxxx	G21AY	2003
JR6-300101 to JR6-3xxxxx	G21AZ	2004
Edit		

The Yamaha G22 or G-MAX began production in 2003 and the serial number is located inside the driver’s side glove compartment.

Gas Yamaha G22A (G-MAX)

Serial Number	Model	Year
JU0-000101 to JU0-100100	G22AY	2003
JU0-100101 to JU0-1xxxxx	G22AZ	2004
JU0-200101 to JU0-209200	G22AA	2005
JU0-209201 to JU0-2xxxxx	G22AB	2005
JU0-300101 to JU0-310100	G22AC	2006
JU0-310101 to JU0-3xxxxx	G22AD	2006
JU0-400101 to JU0-4xxxxx	G22AE	2007

Edit

Electric Yamaha G22E (G-MAX)

Serial Number	Model	Year
JU2-000101 to JU2-100100	G22EY	2003
JU2-100101 to JU2-1xxxxx	G22EZ	2004
JU2-200101 to JU2-205700	G22EA	2005
JU2-205701 to JU2-2xxxxx	G22EB	2005

Electric Yamaha G22E (G-MAX)		
JU2-300101 to JU2-306200	G22EC	2006
JU2-306201 to JU2-3xxxxx	G22ED	2006
JU2-400101 to JU2-4xxxxx	G22EE	2007
Edit		

Gas Yamaha G23A (U-MAX Medium Duty I)		
Serial Number	Model	Year
JU5-000101 to JU5-000401	G23AZ	2004
JU5-000401 to JU5-300101	G23AA	2005
JU5-300101 to JU5-3xxxxx	G23AC	2006
JU5-400101 to JU5-4xxxxx	G23AE	2007
JU5-500101 to JU5-5xxxxx	G23AF	2008
JU5-600101 to JU5-6xxxxx	G23AG	2009
Edit		

Electric Yamaha G23E (U-MAX Medium Duty II)		
Serial Number	Model	Year
JU6-000101 to JU6-00300	G23EZ	2004

Electric Yamaha G23E (U-MAX Medium Duty II)

JU6-000301 to JU6-300100	G23EA	2005
JU6-300101 to JU6-3xxxxx	G23EC	2006
JU6-400101 to JU6-4xxxxx	G2EC	2007
JU6-500101 to JU6-5xxxxx	G23EF	2008
JU6-600101 to JU6-6xxxxx	G23EG	2009
JU6-700101 to JU6-7xxxxx	G23EH	2010

Edit

Gas Yamaha G27A (U-MAX Light Duty)

Serial Number	Model	Year
JU7-000101 to JU5-000500	G27AZ	2004
JU7-000501 to JU5-300100	G27AA	2005
JU7-300101 to JU5-3xxxxx	G27AC	2006
JU7-400101 to JU5-4xxxxx	G27AE	2007
JU7-500101 to JU5-5xxxxx	G27AF	2008

Edit

Electric Yamaha G27E (U-MAX Light Duty)

Serial Number	Model	Year
JU8-000101 to JU8-00300	G27EZ	2004
JU8-000301 to JU8-300100	G27EA	2005
JU8-300101 to JU8-3xxxxx	G27EC	2006
JU8-400101 to JU8-4xxxxx	G27EE	2007
JU8-500101 to JU8-5xxxxx	G27EF	2008

Edit

The Yamaha G29 Years -Includes YDRE YDRA Yamaha Drive

These serial numbers can be found on the passenger side of the vehicle near the rear fender (Gas) and under the seat on the driver’s side (Elec).



Yamaha Model G29

Gas Yamaha G29A/YDRE/DRIVE		
Serial Number	Model	Year
JW1-000101 to JW1-100100	YDRAE	2007
JW1-100101 to JW1-1xxxxx	YDRAF	2008
JW1-200101 to JW1-2xxxxx	YDRAG	2009
JW1-300101 to JW1-3xxxxx	YDRAH	2010
JW8-000101 to JW8-100100	YDRAJ	2011
JW8-100101 to JW8-1xxxxx	YDRAK	2012
JW8-200101 to JW8-2xxxxx	YDRAK	2012.5
JW8-300101 to JW8-3xxxxx	YDRAL	2013
JW8-400101 to JW8-4xxxxx	YDRAM	2014
JW8-500101 to JW8-5xxxxx	YDRAN	2015

Edit

Electric Yamaha G29E/YDRE/DRIVE		
Serial Number	Model	Year
JW2-000101 to JW2-100100	YDREE	2007
JW2-100101 to JW2-1xxxxx	YDREF	2008

Electric Yamaha G29E/YDRE/DRIVE

JW2-200101 to JW2-2xxxxx	YDREG	2009
JW2-300101 to JW2-3xxxxx	YDREH	2010
JW9-000101 to JW9-100100	YDREJ	2011
JW9-100101 to JW9-1xxxxx	YDREK	2012
JW9-200101 to JW9-2xxxxx	YDREK	2012.5
JW9-300101 to JW9-3xxxxx	YDREL	2013
JW9-400101 to JW9-4xxxxx	YDREM	2014
JW9-500101 to JW9-5xxxxx	YDREN	2015

Edit

Conclusion

Yamaha could be considered to be a new-comer in the Golf Cart market, but because they have been in the field of innovation and technology since 1887, they consider themselves as a leading manufacturer of golf carts and other products.

Audio Transcript of This Article

Download A PDF of This Article

About the author