



**Golf Cart Tips**

# What Year Is My Cushman Golf Cart? Master Serial Lookup

[Home](#) [Categories](#) [Privacy Policy](#) [Contact](#) [About Us](#) [Resources](#) [Legal](#)

Search

Search



[Table of Contents >](#)

Last Updated on March 4, 2024 by Chuck Wilson

**Your Cushman golf cart's year is on the serial plate and is the first two digits of the last four numbers.** This is a compiled list of available data to pinpoint your particular **vehicle**. You should have no problem identifying what year is my Cushman golf **cart**.

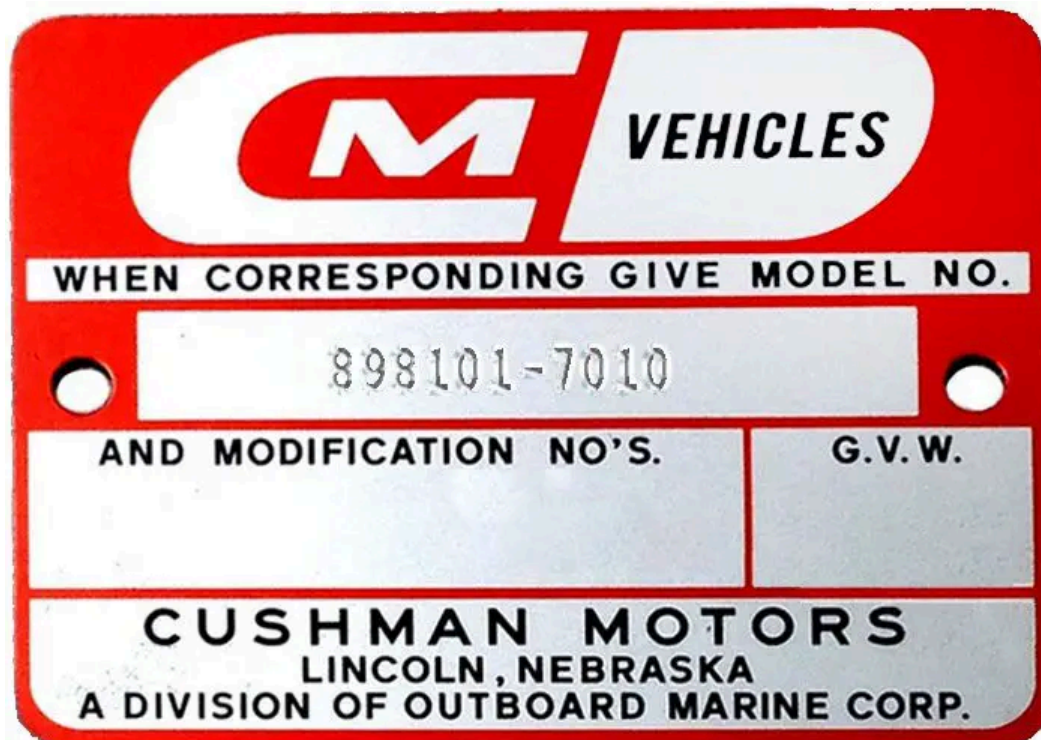
Old Cushman golf carts are rare and considered to be collector's items now. Since manuals are scarce and most specs have been relegated to **microfiche**, it has been a chore in the past to dig up the answers to your questions about your Cushman **golf cart** year and model. Check out our Cushman serial number lookup below.

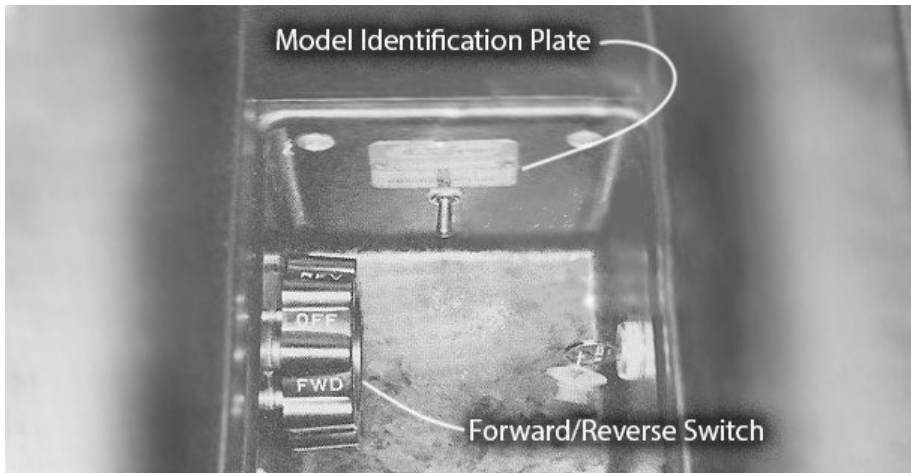
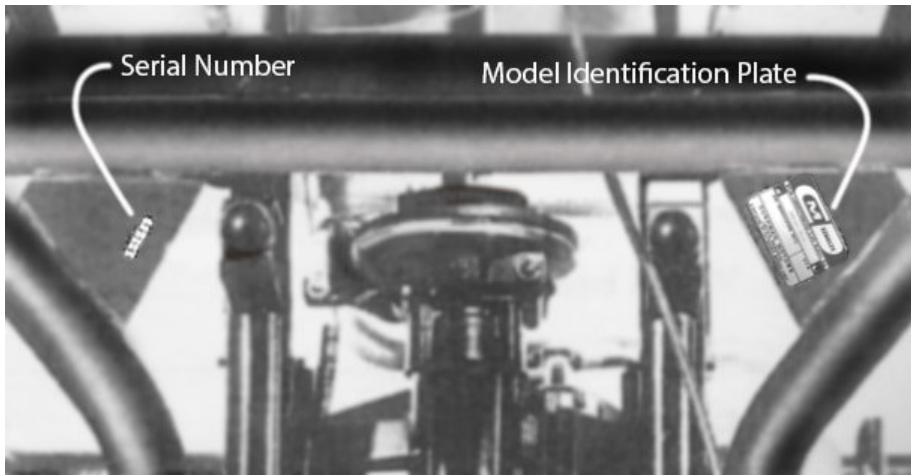
## How Do I Find Out What Year Is My Cushman Golf Cart?

The year is on the serial tag and can read from the first two numbers in the last four digits described below.

### Tag Locations

The Cushman Motor Company was established in 1901 in **Lincoln, Nebraska**, and after changing hands with several owners, ceased production of the **golf cart** in 1975. The crucial numbers found on the **Cushman** vehicles is the **MODEL** number and the **SERIAL** number. The Model Number is usually located under the seat on the driver side of the shift lever console. The number will look like the plate pictured and be riveted to the console. The number usually starts with an '8', like 898100 or 880429. Checking this number on the **chart** below will show you all the different models Cushman made. Many were very similar in appearance, but the wiring schematics and **engine** types varied.





Cushman Motor Company was, as the name implies, mainly in the business of building motors for **farm** equipment and industrial applications. The first **golf carts** began rolling out in 1955 and continued until 1975 when it was decided to abandon the golf cart line in favor of the utility **vehicle** line and turf care products.

The following **chart** has been pared down to focus on just the golf carts and leave out the people-movers and turf workhorses.

To perform a golf cart serial number lookup, follow these steps: 1) Locate the serial number plate on your golf cart, typically found on the frame or dashboard. 2) Compare the serial number with the table below 3) The result will provide information about the make, model, and year of your golf cart.

Model	Series	Year Produced	Description
	732-7	1954	Golfster – 24V
	732-12	1955	Golfster – 24V
	732-19	1956	Golfster – 24V
	733-21	1956	Golfster – 24V
876081	732-34	1957	Golfster – 24V

<b>Model</b>	<b>Series</b>	<b>Year Produced</b>	<b>Description</b>
876083	733-36	1957-59	Golfster - 24V
876084	732-41	1957	Golfster - 36V
	732-42	1957	Golfster - 24V
876107	732-73	1958	Golfster - 24V
876108	732-74	1958	Golfster - 36V
876139	732-105	1959	Golfster - 24V
876140	732-106	1959	Golfster - 36V
878420	732	1960-61	Golfster - 24V
878421	732	1960-61	Golfster - 24V
878422	732	1960	Golfster - 36V
878423	733	1960	Golfster - 24V
878912	732	1961	Golfster - 36V
878915	735	1961-63	Golfster - 18HP
878933	732	1961	Golfster - 36V
878934	732	1961-62	Golfster - 36V
878935	732	1961-62	Golfster - 36V
878988	732	1961	Golfster - 36V
879525	732	1961	Golfster - 24V
879526	732	1961	Golfster - 24V
879527	732	1961	Golfster - 24V
879528	732	1961	Golfster - 24V
879703	732	1962	Golfster - 36V
879704	732	1962	Golfster - 36V
879716	732	1962	Golfster - 36V
879717	735	1962	Golfster - 18HP
880000	735	1963-64	Golfster - 18HP
880014	732	1963	Golfster - 36V Champion

<b>Model</b>	<b>Series</b>	<b>Year Produced</b>	<b>Description</b>
880015	732	1963	Golfster – 36V Champion
880016	732	1963	Golfster – 36V Champion
880017	735	1963–64	Golfster – 18HP
880019	732	1963	Golfster – 36V Deluxe
880020	732	1963	Golfster – 36V Deluxe
880021	732	1963	Golfster – 36V Deluxe
880022	735	1963–64	Golfster – 18HP
880309	732	1964	Golfster – 36V Champion
880310	732	1964	Golfster – 36V Champion
880312	732	1964	Golfster – 36V Deluxe
880313	732	1964–65	Golfster – 36V Deluxe
880314	732	1964	Golfster – 36V Deluxe
880702	732	1965	Golfster – 36V Champion
880703	732	1965	Golfster – 8HP Champion
880705	732	1965	Golfster – 36V Deluxe
880706	732	1965	Golfster – 36V Trophy
880721	732	1965–66	Golfster – 10HP Trophy
880726	736	1965–67	Golfster – 5HP Sears
880726	736	1968	Golfster – 6HP Sears
880727	732	1965	Golfster – 36V Sears
880729	732	1965	Golfster – 36V Sears
881003	732	1966	Golfster – 36V Champion
881004	732	1966	Golfster – 36V Deluxe
881005	732	1966	Golfster – 36V Deluxe
881006	732	1966	Golfster – 36V Trophy
881008	732	1966	Golfster – 8HP Champion
881009	736	1966–68	Golfster – 8HP Scotsman

<b>Model</b>	<b>Series</b>	<b>Year Produced</b>	<b>Description</b>
881015	732	1966	Golfster – 36V Sears
881020	732	1966	Golfster – 8HP Deluxe
881406	732	1967	Golfster – 36V Champion
881407	732	1967	Golfster – 36V Deluxe
881408	732	1967	Golfster – 36V Deluxe
881409	732	1967	Golfster – 36V Trophy
881410	732	1967	Golfster – 10HP Trophy
881412	732	1967	Golfster – 8HP Deluxe
881420	732	1967	Golfster – 36V Sears
881600	732	1968	Golfster – 36V GC-400
881601	732	1968	Golfster – 10HP GC-400
881602	732	1968	Golfster – 36V GC-300
881603	732	1968	Golfster – 8HP GC-300
881604	732	1968	Golfster – 36V Champion
881614	732	1968	Golfster – 36V Sears
881850		1969	Golfster – 36V GC-400
881851		1969	Golfster – 10HP GC-400
881852		1969	Golfster – 36V GC-300
881853		1969	Golfster – 8HP GC-300
881854		1969	Golfster – 36V Champion
Note: From 1970 on there is an addition of a 4 digit number. The first 2 digits denote the year			
898100-7010		1970	Golfster – 36V GC-400
898101-7010		1970	Golfster – 10HP GC-400
898102-7010		1970	Golfster – 36V GC-300
898103-7010		1970	Golfster – 8HP GC-300
898104-7010		1970	Golfster – 36V Champion
898105-7010		1970	Golfster – 5HP Scotsman

<b>Model</b>	<b>Series</b>	<b>Year Produced</b>	<b>Description</b>
898106-7010		1970	Golfster – 36V Trophy 4-Wheel
898100-7110		1971	Golfster – 36V GC-400
898101-7110		1971	Golfster – 10HP GC-400
898102-7110		1971	Golfster – 36V GC-300
898103-7110		1971	Golfster – 10HP GC-300
898106-7110		1971	Golfster – 36V Trophy 4-Wheel
898200-7110		1971	Town and Fairway – 36V
898201-7110		1971	Town and Fairway – 10HP
898100-7210		1972	Golfster – 36V GC-400
898101-7210		1972	Golfster – 10HP GC-400
898102-7210		1972	Golfster – 36V GC-300
898103-7210		1972	Golfster – 10HP GC-300
898106-7210		1972	Golfster – 36V Trophy 400
898108-7210		1972	Golfster – 36V Trophy 300
898200-7210		1972	Town and Fairway – 36V
898201-7210		1972	Town and Fairway – 10HP
898100-7310		1973	Golfster – 36V GC-400
898101-7310		1973	Golfster – 10HP GC-400
898102-7310		1973	Golfster – 36V GC-300
898106-7310		1973	Golfster – 36V Trophy 400
898108-7310		1973	Golfster – 36V Trophy 300
898150-7310	Rebuilt	1973	Golfster – 36V GC-400
898151-7310	Rebuilt	1973	Golfster – 10HP GC-400
898152-7310	Rebuilt	1973	Golfster – 36V GC-300
898153-7310	Rebuilt	1973	Golfster – 10HP GC-300
898200-7310		1973	Town and Fairway – 36V
898201-7310		1973	Town and Fairway – 10HP

Model	Series	Year Produced	Description
898106-7410		1974	Golfster – 36V Trophy 400
898108-7410		1974	Golfster – 36V Trophy 300
898110-7410		1974	Golfster – 36V GC-400
898111-7410		1974	Golfster – 12HP GC-400
898112-7410		1974	Golfster – 36V GC-300
898113-7410		1974	Golfster – 12HP GC-300
898150-7410	Rebuilt	1974	Golfster – 36V GC-400
898152-7410	Rebuilt	1974	Golfster – 36V GC-300
898153-7410	Rebuilt	1974	Golfster – 10HP GC-300
898200-7410		1974	Town and Fairway – 36V
898201-7410		1974	Town and Fairway – 12HP
898106-7510		1975	Golfster – 36V Trophy 400
898110-7510		1975	Golfster – 36V GC-400
898111-7510		1975	Golfster – 12HP GC-400
898112-7510		1975	Golfster – 36V GC-300
898113-7510		1975	Golfster – 12HP GC-300
898200-7510		1975	Town and Fairway – 36V
898201-7510		1975	Town and Fairway – 12HP

Edit

## 1949 – 1954 Golf Buggy

In 1950 Cushman introduced their first three-wheel golf cart called the Golf Buggy.

This was essentially a modified Model 60, powered by a scooter engine.





## Series 732 1954 to 1962 24V And 36V Golfster

Cushman began assigning Series numbers in 1953, beginning with the Truckster.

In 1958 Cushman added a 36 volt model. In 1962, only the 36 volt model was available.



## 1961-64 18HP Husky Engine Golfster

In 1961 Cushman closed down a factory they had and converted it over to aluminum die casting. This is where they built the first 18 hp engines that went into the "Shark Nosed" series 735 golf cart.



## Scotsman 1964-70

Cushman produced the series 736 Scotsman model 881009 from around 1964 to 1968. This model came with an 8 HP Kohler engine. In 1969 the Scotsman model 898105 was introduced and came with a 5 HP, 14.1 cubic inches, four-cycle Briggs and Stratton engine. From 1965 through 1967 Sears offered a rebranded series 736 with the 5 HP engine. The Sears model number was 809.656750. In 1968 Sears sold the cart with a 6 HP engine, model number 809.656751. 1970 was the last year for the Scotsman model.



### KOHLER Engines Dating Chart

B-xxxxxx	8012345	13012345	1712345678
Use The Letter	Use the First 2 digits	Use the first 3 digits	Use the first 2 digits
A 1965	10-19 = 1969	100-109 = 1980	15 = 1985
B 1966	20-29 = 1970	110-119 = 1981	16 = 1986
C 1967	30-39 = 1971	120-129 = 1982	17 = 1987
D 1968	40-49 = 1972	130-139 = 1983	18 = 1988
E 1969	50-59 = 1973	140-149 = 1984	19 = 1989

**KOHLER Engines Dating Chart**

60-69 = 1974	150-159 = 1985	20 = 1990
70-72 = 1975		21 = 1991
73-79 = 1976		22 = 1992
80-89 = 1977		23 = 1993
90-95 = 1978		24 = 1994
96-99 = 1979		25 = 1995

Edit

## 1973-75 Golfster 36V Trophy



## 1968-75 Gran Cushman GC-400

In 1968 Cushman debuted their first steel body four-wheeled golf car, the Gran Cushman Golfster model GC-400 as well as the three-wheel model GC-300. Both models were either gas or electric. The gasoline GC400 used a Kohler 10hp model 241 while the GC300 had a Kohler 8hp model 181 until 1972 when they came with the 10hp 241. The GC400 kept the 10hp until 1974 when they installed the 12hp Kohler model K301400.



The Town and Fairway model was also introduced in 1968 and sported a 4-seater with the 3rd and 4th seat facing backward. This version came in either 36 volt electric or with a 10hp Kohler K241 engine. From 1974 to 1975, the Combo I version of the Town and Fairway was produced which featured the ability to fold down the back passenger seat for golf bags. There were only 200-300 of these built.

From 1972 through 1975 only the 4-wheel cart was constructed.

## In Conclusion

Cushman pretty much dominated the field with their line of golf carts but got a two-punch from Harley Davidson coming out with their gas golf cart and an influx of underpriced EzGo knockoffs made by Melex in Poland.

Management decided to leave the golf cart market and concentrate on building industrial vehicles. Ransomes Ltd. purchased Cushman by in 1989, and Ransomes was in turn acquired in 1998 by Textron, owners of EzGo.

All golf cart production ceased on June 27, 1975.

What year is my Cushman Truckster? **Check it here...**

## Audio Transcript of This Article

## Download A PDF of This Article

### About the author

Chuck began working on golf carts after relocating to a golf community in Arkansas, and acquired an interest in vintage "barn finds". Even with the internet community as a resource for parts and reference, there are some searches that take hours to find needed information...and many results are incorrect. He compiles corrected diagrams and drawings to simplify the hobbyist's quest for identifying and restoring their golf cart. He uses his personal experiences to bring you useful and current info to get the best out of your cart.



### Affiliate Disclaimer

### Search