



Golf Cart Tips

# What Year Is My Cushman Truckster? – Model, Year And Serial Master Chart

[Home](#) [Categories](#) [Privacy Policy](#) [Contact](#) [About Us](#) [Resources](#) [Legal](#)

Search

Search



[Table of Contents](#) >

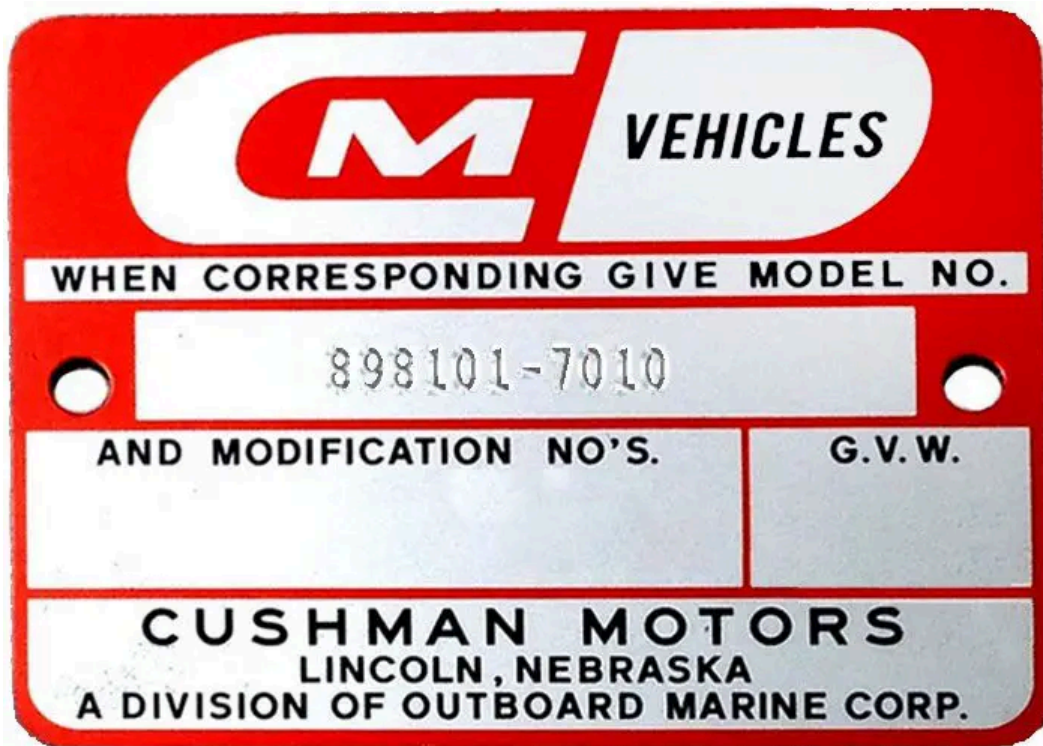
Last Updated on March 5, 2024 by Chuck Wilson

## Introduction to What Year Is My Cushman Truckster?

**The Cushman Truckster year is in the last 4 digits of the serial number. It will be 1952 to 2002 depending on the serial plate, usually located by the handbrake.** I have included a chart below for each year's specific models.

As collectibles go, nothing gets as much attention in the old Cushman line as a Truckster Model. The Cushman Truckster was a utility vehicle produced from 1952 to 2002. If you find yourself adding one to YOUR collection, you may well ask "What year is my Cushman truckster and what will it take to refurbish it?"

Original parts are still available, as well as original parts alternatives from dealers such as [Vintage Golf Cart Parts](#) and [RDM](#).



In 1952, Cushman Inc. began manufacturing three and four-wheeled vehicles called Trucksters. The Truckster models were popular on job sites and in industrial plants. They were used as vehicles for parking meter attendants in many cities. The serial number was stamped on a tag shown here.

[Entire How Tos Listing Here](#)

## Locating The Serial Plate

Trucksters were small and maneuverable vehicles that could haul loads wherever needed. Cushman became a division of the Outboard Marine Corporation in 1962. Ransomes (of Great Britain) purchased Cushman in 1989, and then Textron purchased Ransomes. Determining the production year of a Truckster involves finding its serial number, or contacting Textron. Here are the procedures:

- First, locate the serial number. The Cushman serial number should be six numbers, then a dash, followed by four more numbers, such as 898101-7010. Trucksters often have their serial numbers on a metal plate (See the image above) on the dash near the emergency brake. If not located there, look under the driver's side seat, and on the metal side rail below the floorboard on the driver's side.
- Look at the two numbers following the dash. The two digits following the dash represent the year the Truckster was produced. All Trucksters were produced before 2000; so a model number of 898101-7010 would mean that the Truckster was produced in 1970.
- Finally, if the model is not in the chart below, you can contact Cushman directly by email at [cushman@textron.com](mailto:cushman@textron.com) or at the customer service line 800-774-3946. They can provide information about how to find a serial number or if you found the number but can't decipher it, they can tell you how to determine a production date without a serial number.

Model	Series	Year Produced	Description
	7781	1953-55	Truckster, PU, 7 HP
	782-2	1953-55	Truckster, CH, 7 HP
	781-15	1956	Truckster, PU, 7.95 HP
	782-16	1956	Truckster, CH, 7.95 HP
	781-22	1956	Truckster, PU, 7.95 HP
	782-23	1956	Truckster, CH, 7.95 HP
	783-24	1956	Truckster, 7.95 HP
	783-25	1956	Truckster, 7.95 HP
876085	781-47	1957-58	Truckster, PU, 7.95 HP
876085	782-48	1957-58	Truckster, CH, 7.95 HP
876087	781-49	1957-58	Truckster, PU, 7.95 HP
876088	782-50	1957-58	Truckster, CH, 7.95 HP
876099	782-65	1958	Truckster, CH, 7.95 HP
876100	782-66	1958	Truckster, CH, 7.95 HP
876131	781-97	1959	Truckster, PU, 7.95 HP

Model	Series	Year Produced	Description
876132	781-98	1959	Truckster, CH, 7.95 HP
876134	781-100	1958	Truckster, PU, 7.95 HP
876135	782-101	1959	Truckster, CH, 7.95 HP
878404	781	1960-61	Truckster, PU, 7.95 HP
878407	781	1960-61	Truckster, PU, 7.95 HP
878410	782	1960-61	Truckster, CH, 7.95 HP
878413	782	1960-61	Truckster, CH, 7.95 HP
878449	781	1959	Truckster, PU, 7.95 HP
878452	782	1959	Truckster, CH, 7.95 HP
878455	782	1959	Truckster, CH, 7.95 HP
878458	781	1960-61	Truckster, PU, 7.95 HP
878461	781	1960-61	Truckster, PU, 7.95 HP
878464	782	1960-61	Truckster, CH, 7.95 HP
878467	782	1960-61	Truckster, CH, 7.95 HP
878922	781	1961-62	Truckster, PU, 9 HP
878923	781	1961-62	Truckster, PU, 9 HP
878924	781	1961-62	Truckster, PU, 18 HP
878925	782	1961-62	Truckster, CH, 9 HP
878926	782	1961-62	Truckster, CH, 9 HP
878927	782	1961-62	Truckster, CH, 18 HP
878939	782	1961	Truckster, CH, 7.95 HP
878940	782	1961	Truckster, CH, 7.95 HP
879520	781	1961	Truckster-Army & Navy, 18 HP
879521	781	1961	Truckster-Army & Navy, 18 HP
880001	781	1963	Truckster, PU, 9 HP
880002	781	1963	Truckster, PU, 9 HP
880003	781	1963	Truckster, PU, 18 HP

Model	Series	Year Produced	Description
880004	782	1963	Truckster, CH, 9 HP
880005	782	1963	Truckster, CH, 9 HP
880006	782	1963	Truckster, CH, 18 HP
880315	781	1964	Truckster, CH, 9 HP
880316	781	1964	Truckster, CH, 9 HP
880317	781	1964	Truckster, CH, 18 HP
880318	782	1964	Truckster, CH, 9 HP
880319	782	1964	Truckster, CH, 9 HP
880320	782	1964	Truckster, CH, 18 HP
880325	880	1964	Truckster, turf, 18 HP
880327	780	1964	Truckster, dump body, 18 HP
880328	780	1964	Truckster, sweeper, 18 HP
880329	780	1964	Truckster, 1/2 ton FB, 18 HP
880330	780	1964	Truckster, police, 18 HP
880710	780	1965–68	Truckster, PU, 18 HP
880711	780	1965–68	Truckster, CH, 18 HP
880712	780	1965–68	Truckster, dump body, 18 HP
880714	780	1965–68	Truckster, 1/2 ton FB, 18 HP
880715	780	1965–68	Truckster, police, 18 HP
880718	880	1965–68	Truckster, turf, 18 HP
881416	780	1967–68	Truckster, turf, 8 HP
881419	780	1967–68	Truckster, turf, 18 HP
881863		1969	Turf-Truckster, dump, 12 HP
881864		1969	Turf-Truckster, dump, 18 HP
881868		1969	Turf-Truckster, 18 HP

Note: From 1970 on there is an addition of a 4 digit number. The first 2 digits denote the year, so if the first 2 digits following the dash of the model number is 78, then 1978 is the model year.

Model	Series	Year Produced	Description
898500	7010	1970–71	Turf-Truckster, pickup, 18 HP, 3-Wheel
898501	7010	1970–71	Turf-Truckster, chassis, 18 HP, 3-Wheel
898502	7010	1970–71	Turf-Truckster, dump, 18 HP, 3-Wheel
898504	7010	1970–71	Turf-Truckster, pickup, 18 HP, 3-Wheel
898506	7010	1970–71	Turf-Truckster, pickup, 18 HP, 3-Wheel
898516	7010	1970–71	Turf-Truckster, pickup, 18 HP, 3-Wheel
898520	7010	1970–71	Turf-Truckster, pickup, 18 HP, 3-Wheel
898522	7010	1970–71	Turf-Truckster, dump, 18 HP, 3-Wheel
898526	7010	1970–71	Turf-Truckster, pickup, 18 HP, 3-Wheel
898540	7010	1970–71	Turf-Truckster, pickup, 18 HP, 3-Wheel
898541	7010	1970–71	Turf-Truckster, chassis, 18 HP, 3-Wheel
898542	7010	1970–71	Turf-Truckster, dump, 18 HP, 3-Wheel
898544	7010	1970–71	Turf-Truckster, pickup, 18 HP, 3-Wheel
898500	7110	1971	Turf-Truckster, pickup, 18 HP, 3-Wheel
898501	7110	1971	Turf-Truckster, chassis, 18 HP, 3-Wheel
898502	7110	1971	Turf-Truckster, dump, 18 HP, 3-Wheel
898504	7110	1971	Turf-Truckster, pickup, 18 HP, 3-Wheel
898506	7110	1971	Turf-Truckster, pickup, 18 HP, 3-Wheel
898516	7110	1971	Turf-Truckster, pickup, 18 HP, 3-Wheel
898520	7110	1971	Turf-Truckster, pickup, 12 HP, 3-Wheel
898522	7110	1971	Turf-Truckster, dump, 12 HP, 3-Wheel
898526	7110	1971	Turf-Truckster, pickup, 18 HP, 3-Wheel
898540	7110	1971	Turf-Truckster, pickup, 18 HP, 4-Wheel
898541	7110	1971	Turf-Truckster, chassis, 18 HP, 4-Wheel
898542	7110	1971	Turf-Truckster, dump, 18 HP, 4-Wheel
898544	7110	1971	Turf-Truckster, pickup, 18 HP, 4-Wheel
898500	7210	1972	Turf-Truckster, pickup, 18 HP, 3-Wheel

Model	Series	Year Produced	Description
898501	7210	1972	Turf-Truckster, chassis, 18 HP, 3-Wheel
898502	7210	1972	Turf-Truckster, dump, 18 HP, 3-Wheel
898504	7210	1972	Turf-Truckster, pickup, 18 HP, 3-Wheel
898506	7210	1972	Turf-Truckster, pickup, 18 HP, 3-Wheel
898516	7210	1972	Turf-Truckster, pickup, 18 HP, 3-Wheel
898520	7210	1972	Turf-Truckster, pickup, 12 HP, 3-Wheel
898522	7210	1972	Turf-Truckster, pickup, 12 HP, 3-Wheel
898526	7210	1972	Turf-Truckster, pickup, 12 HP, 3-Wheel
898540	7210	1972	Turf-Truckster, pickup, 18 HP, 4-Wheel
898541	7210	1972	Turf-Truckster, chassis, 18 HP, 4-Wheel
898542	7210	1972	Turf-Truckster, dump, 18 HP, 4-Wheel
898544	7210	1972	Turf-Truckster, pickup, 18 HP, 4-Wheel
898500	7310	1973	Turf-Truckster, pickup, 18 HP, 3-Wheel
898501	7310	1973	Turf-Truckster, chassis, 18 HP, 3-Wheel
898502	7310	1973	Turf-Truckster, dump, 18 HP, 3-Wheel
898504	7310	1973	Turf-Truckster, pickup, 18 HP, 3-Wheel
898506	7310	1973	Turf-Truckster, pickup, 18 HP, 3-Wheel
898507	7310	1973	Turf-Truckster, chassis, 18 HP, 3-Wheel
898516	7310	1973	Turf-Truckster, pickup, 18 HP, 3-Wheel
898520	7310	1973	Turf-Truckster, pickup, 12 HP, 3-Wheel
898522	7310	1973	Turf-Truckster, dump, 12 HP, 3-Wheel
898526	7310	1973	Turf-Truckster, pickup, 12 HP, 3-Wheel
898527	7310	1973	Turf-Truckster, chassis, 12 HP, 3-Wheel
898540	7310	1973	Turf-Truckster, pickup, 18 HP, 4-Wheel
898541	7310	1973	Turf-Truckster, chassis, 18 HP, 4-Wheel
898542	7310	1973	Turf-Truckster, dump, 18 HP, 4-Wheel
898544	7310	1973	Turf-Truckster, pickup, 18 HP, 4-Wheel

Model	Series	Year Produced	Description
898547	7310	1973	Turf-Truckster, chassis, 18 HP, 4-Wheel
898504	7410	1974	Turf-Truckster, pickup, 18 HP, 3-Wheel
898507	7410	1974	Turf-Truckster, chassis, 18 HP, 3-Wheel
898527	7410	1974	Turf-Truckster, chassis, 12 HP, 3-Wheel
898547	7410	1974	Turf-Truckster, chassis, 18 HP, 4-Wheel
898504	7510	1975	Turf-Truckster, pickup, 18 HP, 3-Wheel
898507	7510	1975	Turf-Truckster, chassis, 18 HP, 3-Wheel
898527	7510	1975	Turf-Truckster, chassis, 12 HP, 3-Wheel
898547	7510	1975	Turf-Truckster, chassis, 18 HP, 4-Wheel
898504	7610	1976	Turf-Truckster, pickup, 18 HP, 3-Wheel
898507	7610	1976	Turf-Truckster, chassis, 18 HP, 3-Wheel
898524	7610	1976	Turf-Truckster, pickup, 12 HP, 3-Wheel
898527	7610	1976	Turf-Truckster, chassis, 12 HP, 3-Wheel
898547	7610	1976	Turf-Truckster, chassis, 18 HP, 4-Wheel
898504	7710	1977	Turf-Truckster, pickup, 18 HP, 3-Wheel
898507	7710	1977	Turf-Truckster, chassis, 18 HP, 3-Wheel
898524	7710	1977	Turf-Truckster, pickup, 12 HP, 3-Wheel
898547	7710	1977	Turf-Truckster, chassis, 18 HP, 3-Wheel
898507	7810	1978	Turf-Truckster, chassis, 18 HP, 3-Wheel
898519	7810	1978	Turf-Truckster, flatbed, 18 HP, 3-Wheel
898525	7810	1978	Turf-Truckster, flatbed, 12 HP, 3-Wheel
898547	7810	1978	Turf-Truckster, chassis, 18 HP, 4-Wheel
898507	7910	1979	Turf-Truckster, chassis, 18 HP, 3-Wheel
898515	7910	1979	Turf-Truckster, pickup, 18 HP, 3-Wheel
898525	7910	1979	Turf-Truckster, pickup, 12 HP, 3-Wheel
898547	7910	1979	Turf-Truckster, chassis, 18 HP, 4-Wheel
898507	8010	1980	Turf-Truckster, chassis, 18 HP, 3-Wheel



Model	Series	Year Produced	Description
898515	8010	1980	Turf-Truckster, pickup, 18 HP, 3-Wheel
898525	8010	1980	Turf-Truckster, pickup, 12 HP, 3-Wheel
898547	8010	1980	Turf-Truckster, chassis, 18 HP, 4-Wheel
898507	8110	1981	Turf-Truckster, chassis, 18 HP, 3-Wheel
898515	8110	1981	Turf-Truckster, pickup, 18 HP, 3-Wheel
898525	8110	1981	Turf-Truckster, pickup, 12 HP, 3-Wheel
898547	8110	1981	Turf-Truckster, chassis, 18 HP, 4-Wheel
898530	8210	1982	Turf-Truckster, chassis, 18 HP, 3-Wheel
898531	8210	1982	Turf-Truckster, pickup, 18 HP, 3-Wheel
898532	8210	1982	Turf-Truckster, chassis, 18 HP, 4-Wheel
898533	8210	1982	Turf-Truckster, pickup, 12 HP, 3-Wheel
898530	8310	1983	Turf-Truckster, chassis, 18 HP, 3-Wheel
898531	8310	1983	Turf-Truckster, pickup, 18 HP, 3-Wheel
898532	8310	1983	Turf-Truckster, chassis, 18 HP, 4-Wheel
898533	8310	1983	Turf-Truckster, pickup, 12 HP, 3-Wheel
898530	8410	1984	Turf-Truckster, chassis, 18 HP, 3-Wheel
898531	8410	1984	Turf-Truckster, pickup, 18 HP, 3-Wheel
898532	8410	1984	Turf-Truckster, chassis, 18 HP, 4-Wheel
898534	8410	1984	Turf-Truckster, pickup, 12 HP, 3-Wheel
898530	8510	1985	Turf-Truckster, chassis, 22 HP, 3-Wheel
898531	8510	1985	Turf-Truckster, pickup, 22 HP, 3-Wheel
898532	8510	1985	Turf-Truckster, chassis, 22 HP, 4-Wheel
898534	8510	1985	Turf-Truckster, pickup, 12 HP, 3-Wheel
898530	8610	1986	Turf-Truckster, chassis, 22 HP, 3-Wheel
898531	8610	1986	Turf-Truckster, pickup, 22 HP, 3-Wheel
898532	8610	1986	Turf-Truckster, chassis, 22 HP, 4-Wheel
898534	8610	1986	Turf-Truckster, pickup, 12 HP, 3-Wheel

Model	Series	Year Produced	Description
898530	8710	1987	Turf-Truckster, chassis, 22 HP, 3-Wheel
898531	8710	1987	Turf-Truckster, pickup, 22 HP, 3-Wheel
898532	8710	1987	Turf-Truckster, chassis, 22 HP, 4-Wheel
898530	8810	1988	Turf-Truckster, chassis, 22 HP, 3-Wheel
898531	8810	1988	Turf-Truckster, pickup, 22 HP, 3-Wheel
898532	8810	1988	Turf-Truckster, chassis, 22 HP, 4-Wheel
898530	8910	1989	Turf-Truckster, chassis, 22 HP, 3-Wheel
898531	8910	1989	Turf-Truckster, pickup, 22 HP, 3-Wheel
898532	8910	1989	Turf-Truckster, chassis, 22 HP, 4-Wheel
898630	8910	1989	Turf-Truckster, pickup, 27 HP, 3-Wheel
898530	9010	1990	Turf-Truckster, chassis, 22 HP, 3-Wheel
898531	9010	1990	Turf-Truckster, pickup, 22 HP, 3-Wheel
898532	9010	1990	Turf-Truckster, chassis, 22 HP, 4-Wheel
898630	9010	1990	Turf-Truckster, chassis, 27 HP, liquid cooled, gas 3-Wheel
898632	9010	1990	Turf-Truckster, chassis, 27 HP, liquid cooled, gas 4-Wheel
898633	9010	1990	Turf-Truckster, chassis, 21.5 HP, liquid cooled, diesel 3-Wheel
898634	9010	1990	Turf-Truckster, chassis, 21.5 HP, liquid cooled, diesel 4-Wheel
898630	9110	1991	Turf-Truckster, chassis, 27 HP, liquid cooled, gas 3-Wheel
898632	9110	1991	Turf-Truckster, chassis, 27 HP, liquid cooled, gas 4-Wheel
898633	9110	1991	Turf-Truckster, chassis, 21.5 HP, liquid cooled, diesel 3-Wheel
898634	9110	1991	Turf-Truckster, chassis, 21.5 HP, liquid cooled, diesel 4-Wheel
898530		1992	Turf-Truckster, chassis, 22 HP, 3-Wheel
898531		1992	Turf-Truckster, pickup, 22 HP, 3-Wheel

Model	Series	Year Produced	Description
898532		1992	Turf-Truckster, chassis, 22 HP, 4-Wheel
898630		1992	Turf-Truckster, chassis, 27 HP, liquid cooled, gas 3-Wheel
898632		1992	Turf-Truckster, chassis, 27 HP, liquid cooled, gas 4-Wheel
898633		1992	Turf-Truckster, chassis, 21.5 HP, liquid cooled, diesel 3-Wheel
898634		1992	Turf-Truckster, chassis, 21.5 HP, liquid cooled, diesel 4-Wheel
898635		1992	Spray Truckster 27 HP, liquid cooled, 3-Wheel 160 gal.
898530		1993	Turf-Truckster, chassis, 22 HP, 3-Wheel
898531		1993	Turf-Truckster, pickup, 22 HP, 3-Wheel
898532		1993	Turf-Truckster, chassis, 22 HP, 4-Wheel
898535		1993	Spray Truckster 22 HP, 3-Wheel 160 gal.
898632		1993	Turf-Truckster, chassis, 27 HP, liquid cooled, gas 4-Wheel
898633		1993	Turf-Truckster, chassis, 21.5 HP, liquid cooled, diesel 3-Wheel
898634		1993	Turf-Truckster, chassis, 21.5 HP, liquid cooled, diesel 4-Wheel
898635		1993	Spray Truckster 27 HP, liquid cooled, 3-Wheel 160 gal.

Edit

Cushman Trucksters are still available to the avid collectors on buy and sell sites like Smart Cycle Guide. Check them out, and you will see a good comparison of what your vehicle may be worth!

Exploring the history of Cushman Trucksters offers a fascinating glimpse into the evolution of utility vehicles over five decades. From its inception in 1952 until the end of production in 2002, the Cushman Truckster evolved through various models, each reflecting the needs and technologies of its time.

**Early Beginnings to 2002** The journey began when Cushman introduced the first Truckster models. These early versions were designed for utility and efficiency, quickly becoming

indispensable in industrial plants and job sites. The Truckster's ability to navigate narrow spaces made it a favorite for parking meter attendants in cities across the United States.

**Key Models and Their Features** Over the years, the Truckster underwent several transformations, adapting to the changing demands of its users. The 1950s and 60s models, for example, were known for their simplicity and ruggedness, suitable for a variety of tasks from hauling to maintenance work. By the 1970s and 80s, the Truckster had embraced more powerful engines and began to offer more specialized models, including those designed for turf maintenance and public safety.

One notable model is the 898500 series from the early 70s, which introduced a more robust engine and a three-wheel design, enhancing its utility and maneuverability. The late 80s and 90s saw the introduction of the 898630 series, which boasted a 27 HP, liquid-cooled engine, marking one of the most significant upgrades in the Truckster's history.

The evolution of the Cushman Truckster mirrors the technological and societal changes of the latter half of the 20th century. Each model tells a story of innovation, adaptation, and reliability, making the Truckster not just a utility vehicle but a symbol of American ingenuity.

Understanding the history and key models of the Cushman Truckster not only enriches your knowledge as an owner or enthusiast but also deepens your appreciation for this iconic vehicle. Whether you're restoring a vintage model or simply curious about its origins, the Truckster's legacy is a testament to its enduring appeal and functionality.

**Finding Parts for Your Model** One of the initial challenges in refurbishing a Cushman Truckster is locating the right parts. Given the wide range of models produced over the years, each with its unique specifications, finding the correct components requires diligence. Start with specialized dealers like Vintage Golf Cart Parts and RDM, known for their comprehensive collections of vintage and replica parts. Online forums and communities of Cushman enthusiasts can also be invaluable resources, offering tips, leads, and sometimes even parts for sale or trade.

**Restoration Tips** Restoring a Cushman Truckster is as much an art as it is a science. Here are some tips to guide you through the process:

- **Document Everything:** Before disassembly, take detailed photos and notes. This documentation will be invaluable when it's time to reassemble.
- **Prioritize Authenticity:** Whenever possible, opt for original parts or high-quality replicas that maintain the Truckster's authentic look and feel.
- **Seek Expert Advice:** Don't hesitate to reach out to restoration experts or experienced members of the Cushman community. Their insights can save you time and ensure a more accurate restoration.
- **Be Patient:** Restoration is a meticulous process that shouldn't be rushed. Take your time to ensure each step is done correctly.

**Joining the Community** Engaging with the Cushman Truckster community can significantly enhance your restoration journey. Clubs and online forums are not just sources of parts and advice; they're also platforms for sharing successes and challenges.

Participating in these communities can provide moral support and inspiration, making the restoration process more enjoyable and rewarding.

**Showcasing Your Truckster** Once your Cushman Truckster is restored, it's time to show it off. Local car and utility vehicle shows are great venues to display your Truckster, connect with fellow enthusiasts, and even win accolades for your restoration efforts. Sharing your Truckster's story and restoration journey can also inspire others to undertake their projects, contributing to the preservation of these historic vehicles.

Refurbishing a Cushman Truckster is a journey back in time, a labor of love that pays homage to the vehicle's heritage and ensures its legacy endures. It's about more than just bringing a vintage vehicle back to life; it's about preserving a piece of history for future generations to admire and enjoy.

With your Truckster restored, you're not just a vehicle owner; you're a custodian of history, part of a community dedicated to the celebration and preservation of these iconic vehicles.

### Regular Maintenance Checklist

- **Engine Care:** Regularly check the engine oil level and change the oil according to the manufacturer's recommendations. For older models, consider using oil suitable for vintage engines to provide better protection.
- **Battery Maintenance:** For electric models, ensure the battery terminals are clean and corrosion-free. Check the water level in each cell and charge the battery after use to keep it in optimal condition.
- **Tire Inspection:** Inspect the tires for signs of wear, cracks, or age-related deterioration. Maintain proper tire pressure to ensure safety and extend tire life.
- **Brake System:** Check the brake pads, shoes, and fluid levels regularly. Adjust and replace them as necessary to maintain effective braking performance.
- **Lubrication:** Regularly lubricate moving parts, including the steering system, suspension, and any pivot points, to prevent wear and ensure smooth operation.
- **Cleaning:** Keep your Truckster clean from dirt, grime, and debris. Use gentle cleaning products that won't harm the paint or finishes, especially on vintage models.

**Troubleshooting Common Issues** Even with diligent maintenance, you may encounter common issues. Here are solutions to some typical problems:

- **Starting Problems:** If your Truckster has trouble starting, check the battery (for electric models) or the fuel system and spark plugs (for gas models). Ensure connections are secure and components are in good condition.
- **Poor Performance:** For electric Trucksters, poor performance might indicate battery issues. For gas models, check the air filter, fuel filter, and carburetor for blockages or wear.
- **Brake Issues:** If brakes are less responsive, inspect for worn pads or shoes, low brake fluid, or air in the hydraulic lines. Adjustments or replacements may be necessary.

## Frequently Asked Questions

## How can I determine the year of my Cushman Truckster?

The year of your Cushman Truckster is encoded in the last four digits of the serial number, usually found on a metal plate near the emergency brake or under the driver's seat. The format is typically six numbers, a dash, followed by four more numbers, with the last four indicating the year of manufacture.

## Where can I find parts for my Cushman Truckster restoration project?

Parts can be sourced from specialized dealers like Vintage Golf Cart Parts and RDM, as well as online marketplaces and forums dedicated to Cushman enthusiasts. Joining a Cushman Truckster club or online community can also provide leads on where to find specific parts.

## What are some tips for restoring a Cushman Truckster?

Document every step of the disassembly and restoration process.  
Prioritize finding original or high-quality replica parts to maintain authenticity.  
Seek advice from the Cushman community for specific restoration challenges.  
Be patient and thorough in your restoration efforts to ensure the best outcome.

## How often should I perform maintenance on my Cushman Truckster?

Regular maintenance schedules vary depending on usage, but it's recommended to:

- \* Check the engine oil and perform oil changes regularly.
- \* Inspect the battery, tires, and brakes periodically for signs of wear or deterioration.
- \* Lubricate moving parts to ensure smooth operation.
- \* Keep the Truckster clean to prevent rust and corrosion.

## Can I use my Cushman Truckster for daily tasks or should it be for show only?

Many Cushman Trucksters are fully functional and can be used for daily tasks, provided they are maintained properly. However, if your Truckster is a rare model or has been meticulously restored, you might choose to reserve it for shows and parades to preserve its condition.

## Audio Transcript of This Article